

Albemarle Hospital: High Tech Healthcare Provider

**Presentation
to
Dare County Board of Commissioners**

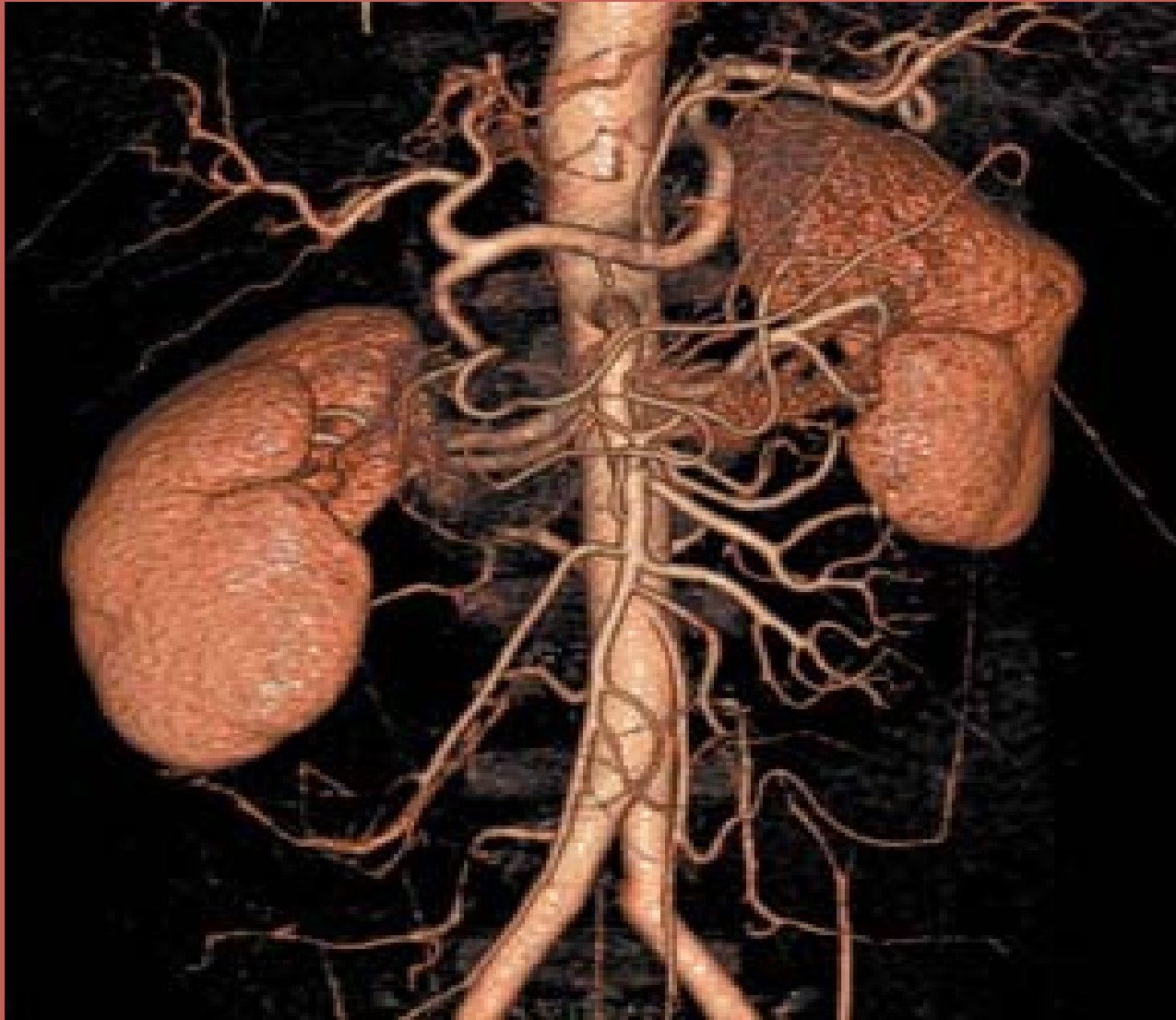
August 1, 2005



Albemarle Hospital offers our region state-of-the-art healthcare usually not seen in similarly sized community hospitals:

- Brain surgery using Stealth Brain-Mapping technology
- Cardiac care including diagnostic catheterizations, placement of drug-eluting stents, & other coronary interventions such as angioplasties
- Complete diagnostic radiology services including nuclear medicine, MRI, breast MRI, Mobile PET services, CT scans utilizing a 16 slice, 3-D spiral CT scanner , and acquisition of a PACS digital imaging system in 2005





Hospital Services

- Multi-modality cancer treatment including radiation therapy employing a new linear accelerator acquired in 2003, and soon to offer CT simulation, as well as multi-leaf intensity-modulated radiation therapy (IMRT) allowing the delivery of precise doses of high energy radiation to tumors
- Renal Dialysis
- Green laser technology used to treat prostate conditions
- Mammography services, with digital mammography technology to be acquired in the Fall of 2005.
- Fast Track Emergency Room service
(11:00 a.m. – 11:00 p.m.)



Physicians

- Medical staff is growing to meet the increased healthcare needs of the region
- Hospital recruits only board-certified/eligible physicians
- Top quality physicians trained at programs such as:
 - Duke, UNC, ECU, Harvard, Mayo Clinic, Columbia, Temple, Bowman-Grey, Georgetown, Baylor, Penn State, UVA, etc.



Physician Specialties

Allergy/Asthma
Anesthesiology
Cardiology
ENT
General Surgery
Neurosurgery
Ophthalmology
Orthopedics
Plastic Surgery
Radiation Oncology
Radiology
Rheumatology
Urology
Vascular Surgery

Dermatology
Emergency Medicine
Endocrinology
Family Practice
Gastroenterology
Internal Medicine
Medical Oncology
Nephrology
Neurology
OB/GYN
Pathology
Pediatrics
Pulmonology

